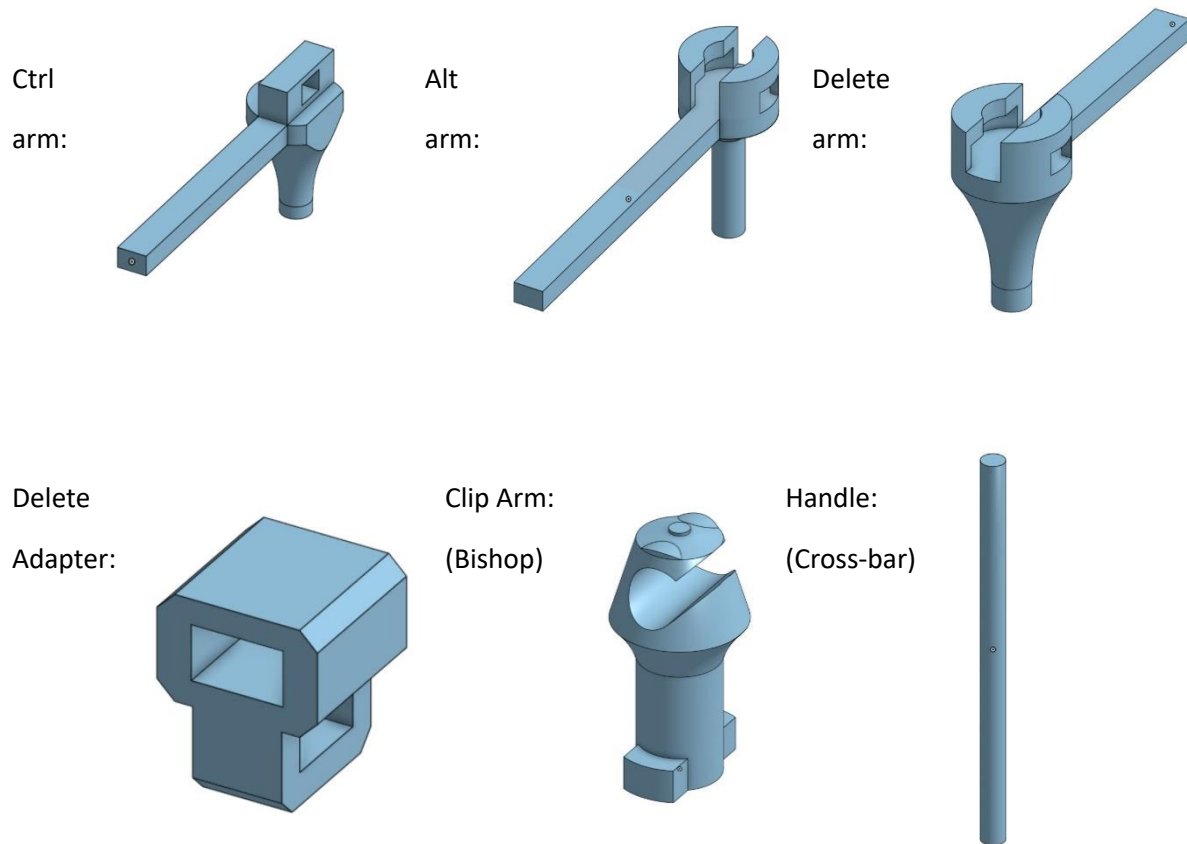


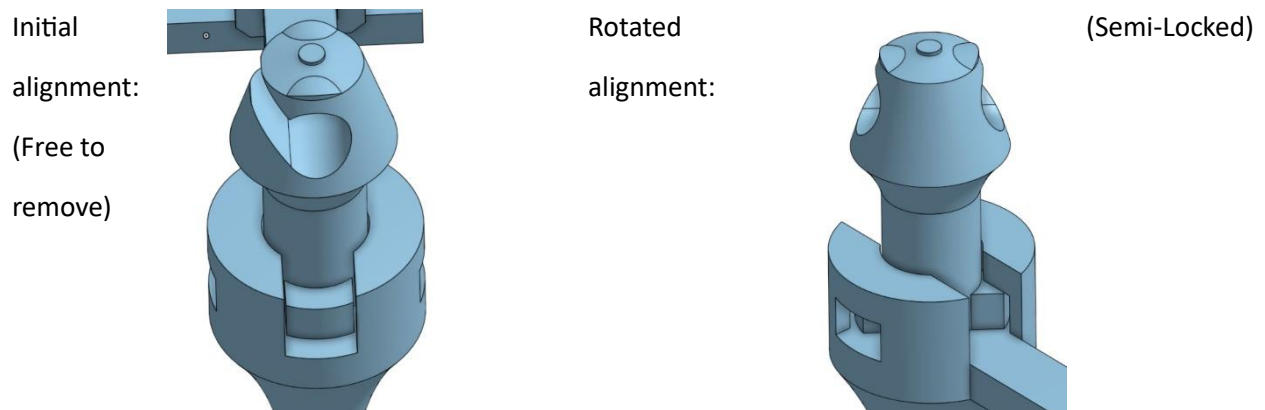
The CLT Task Manager: An adjustable device for your keyboard pressing needs. This device was designed with the loss of finger dexterity for IT professionals in mind. It could also be used as an assistive device to reduce the ergonomic strain that this typical motion can cause in conditions such as carpal tunnel.

The task manager is composed of 6 different parts with 7 used in construction: The alt arm, the control (ctrl) arm, the delete arm, the delete arm adapter, the clip arms (bishops) x2, and the handle (cross-bar).



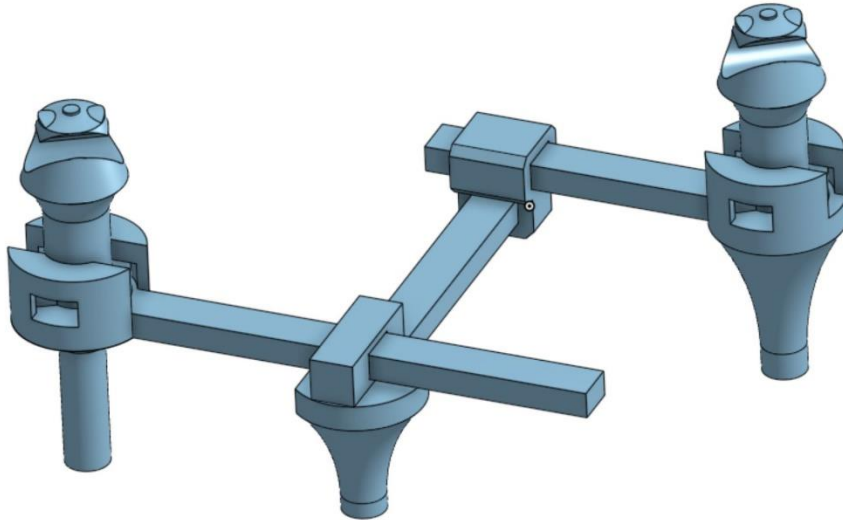
Each of the pieces has been printed and tested out of 15-20% PLA with tetrahedral infill on standard experimental/rapid prototype settings, but changes to the settings can be made for user preference.

The clip arms rotate to lock in place and adjust to different keyboard configurations, as seen below:



All the parts being assembled as shown below:

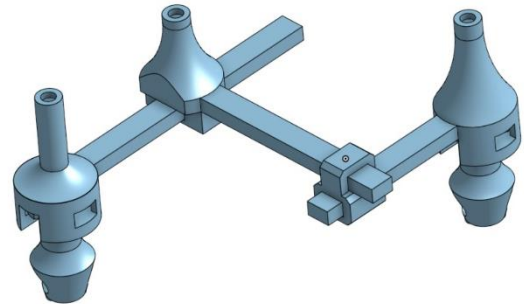
Completed Assembly:



Developer note:

The delete adapter can be used in either configuration, just user preference on how it is oriented for use of operation.

Holes have been added to the bottom to allow the addition of pencil erasers to be attached for additional grip.



The attached erasers can be seen in the prototype image below:



Version 1.0.0 Completed Prototype

Operation of the Task Manager:

It can be used in whatever configuration the user sees fit to their specific needs. In development, it was found that the task manager was easiest handled in a configuration shown to the right, where no finger dexterity was required to use. It could be used by grabbing the bar as well as pictured below:



Variability in the handling of the device was made to help accommodate and improve the experience for all users of this device.

Version 1.0.0 was designed to allow the pressing of the Control (Ctrl), Alt, and Delete keys to help initiate the task manager process. Any additional configurations have not been explored by the design team.

This concludes the instructions on the construction and operation of the task manager keyboard assistive device.

Any further design revisions or comments to the design should be sent to jpoulnot@charlotte.edu or rchi1@charlotte.edu and will be addressed at the earliest convenience of the designer. Remixes of the design are welcome and could be used to accomplish other various keyboard pressing configurations!

Designed by: Jackson Poulcott 11/07/2023

Disclaimer: Care should be taken when removing support filament so as not to damage any pieces. Any injury resulting from the construction, assembly, or use of this device is the responsibility of the person downloading the files. The designers are not liable for any misuse or negligence in the construction, assembly, or operation of the device.